



Made for ideas.

LACIE PRIVATE-PUBLIC USER MANUAL



[CLICK **HERE** TO ACCESS AN **UP-TO-DATE ONLINE VERSION**](#)

of this document. Online User Manuals feature expandable illustrations, easier navigation, and search capability.

INTRODUCTION

LaCie Private-Public allows you to create a password-protected volume called LA-PRIVATE. Once created, LA-PRIVATE will use AES 256 encryption to keep your most important files safe. If you do not have LaCie Private-Public, please [DOWNLOAD](#) the installer from our website.



Before continuing with the configuration, please read the following notes:

- The instructions listed here apply to all LaCie storage devices, including hard drives and USB Keys.
- If you [DOWNLOAD](#) LaCie Private-Public from LaCie's website, **YOU MUST COPY THE FOLDER TO YOUR LACIE STORAGE DEVICE** before configuring the encrypted volume. Running the application from My Computer/Computer or the Mac desktop will create an encrypted volume on your internal hard drive.
- The name of your partition may not be the same as listed here. These directions assume LaCie Setup Assistant has created a partition named **LACIE**. While certain USB Keys and formatting utilities will present alternative names, there is no impact on the use of LaCie Private-Public.
- Transfer speeds may be slower with encrypted volumes. For optimal performance, please consider creating LA-PRIVATE volumes no greater than 50GB.

MAC USERS - INSTALL OSXFUSE BEFORE CREATING LA-PRIVATE

Note: Windows users may skip this section.

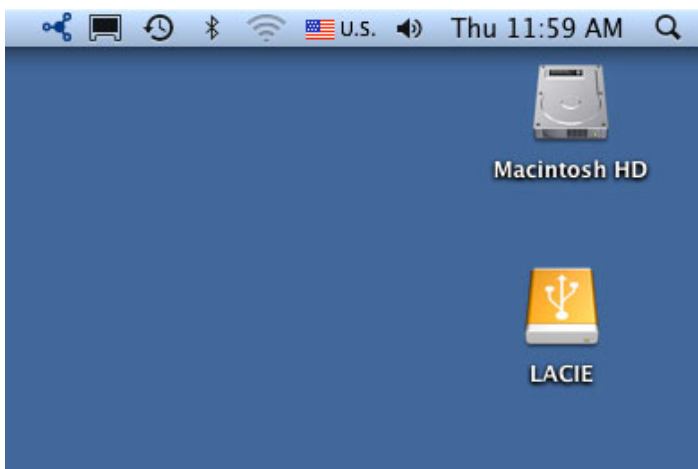
LaCie Private-Public requires OSXFuse to run on your Macintosh computer. If OSXFuse is not installed on your computer, LaCie Private-Public will prompt you to install it before creating the encrypted LA-PRIVATE volume. To check if your computer has OSXFuse, go **System Preferences... > Other**.

If you do not have OSXFuse, go to [New OSXFuse Installation](#).

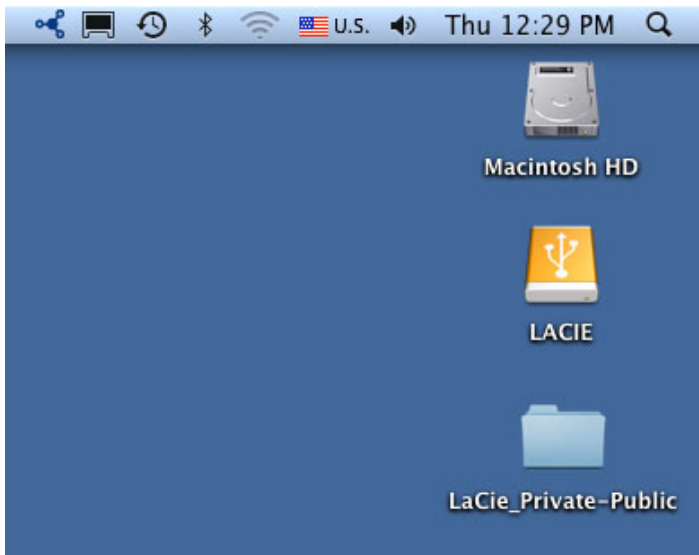
If MacFuse or OSXFuse is already installed on your computer, LaCie recommends that you follow the directions in [OSXFuse Update](#).

NEW OSXFUSE INSTALLATION

1. Connect your LaCie storage device to a compatible interface port on your computer. The LACIE partition will appear on your desktop.

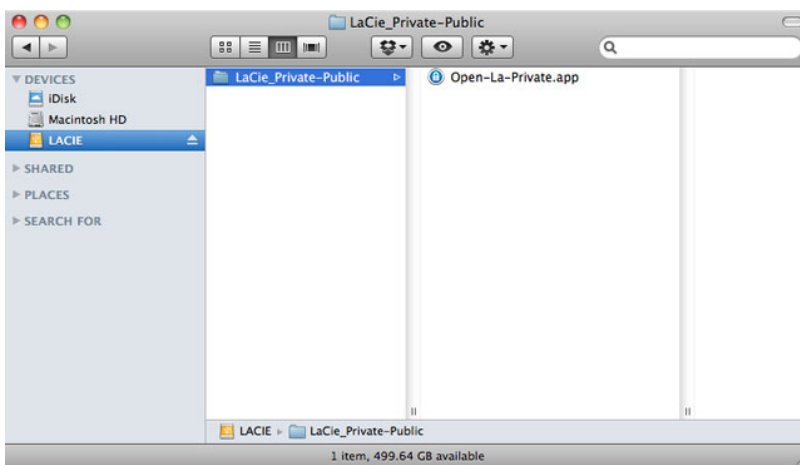


2. If you downloaded LaCie Private-Public from the LaCie website, the application may appear on your computer desktop or the Downloads folder. To create a secure volume, LaCie Private-Public must be stored on your LaCie external hard drive. Before moving forward, copy the folder containing the application to the LACIE partition. Please note that running the application from the Mac desktop will create an encrypted volume on your internal hard drive.



Copy Private-Public to the LACIE partition

3. Click twice on the LACIE icon on the desktop or open it using the Finder.



4. Click twice on the application icon.
5. If your computer does not have OSXFuse, a window will prompt you to install it. Click **Download OSXFuse**.
6. Follow the OSXFuse links to download the .dmg file.
7. Once downloaded, click twice on the OSXFuse.pkg file.
8. Follow the OSXFuse installer to completion. LaCie recommends accepting the licensing terms in order to finish the OSXFuse installation. OSXFuse must be installed to create the LA-PRIVATE volume.
9. Go to the next section to create the LA-PRIVATE volume.

OSXFUSE UPDATE

The version of OSXFuse in this section is compatible with Mac OS X 10.5 and higher.

1. [DOWNLOAD](#) the update for OSXFuse at the LaCie website.
2. You can run the update directly from your desktop or Downloads folder.
3. Click twice on the .dmg file for the installer. A new window will open.
4. Follow the OSXFuse installer to completion.

CREATE THE LA-PRIVATE VOLUME

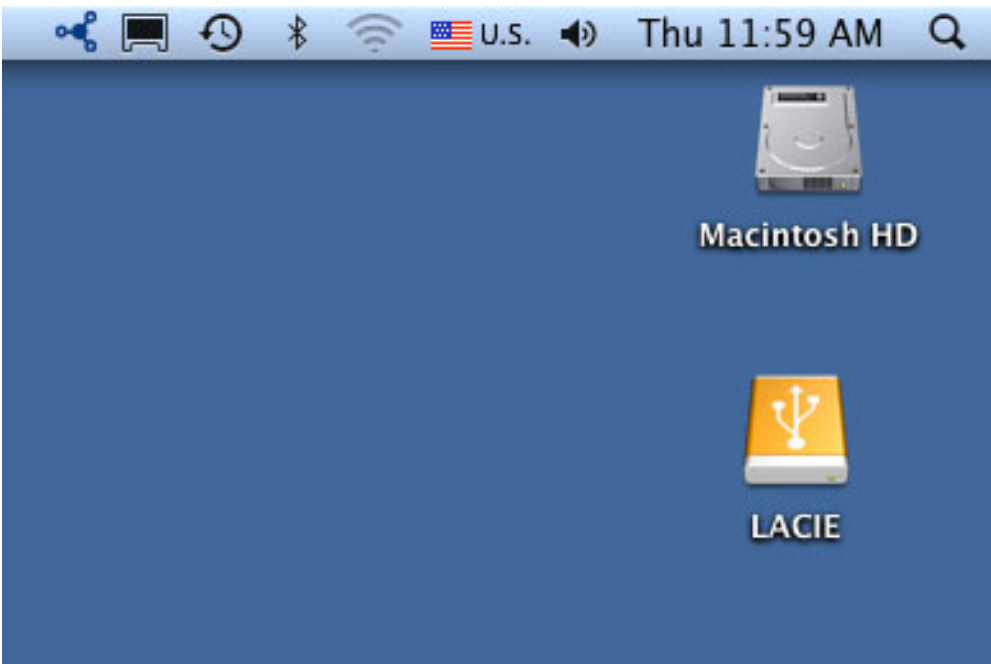
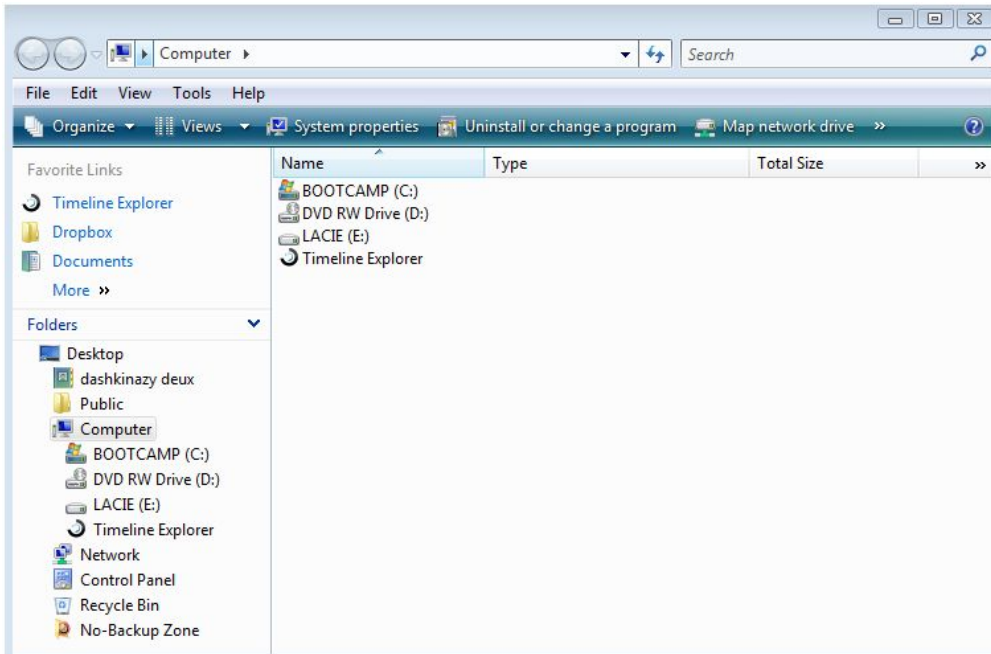
ALL USERS

Please read the following recommendations before creating LA-PRIVATE:

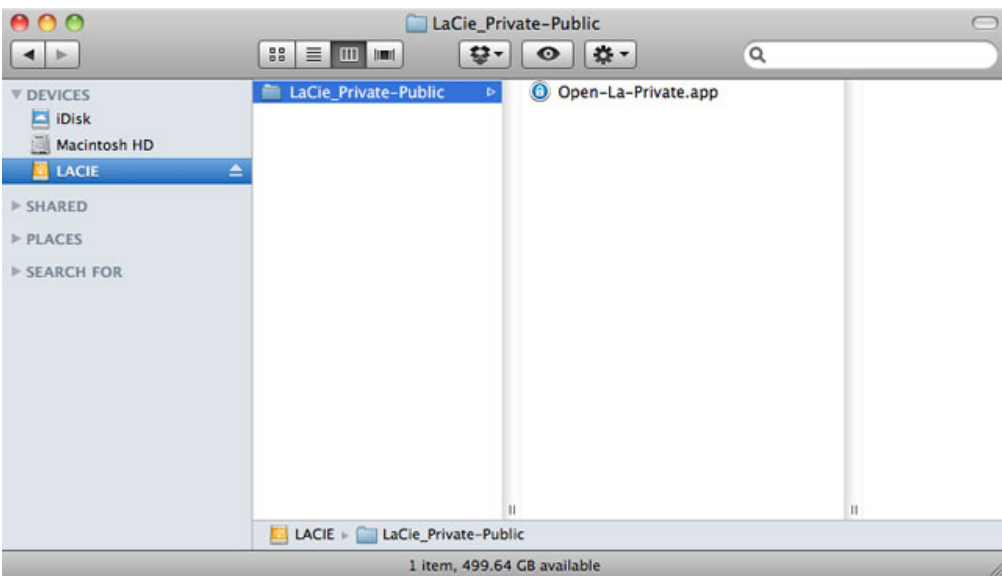
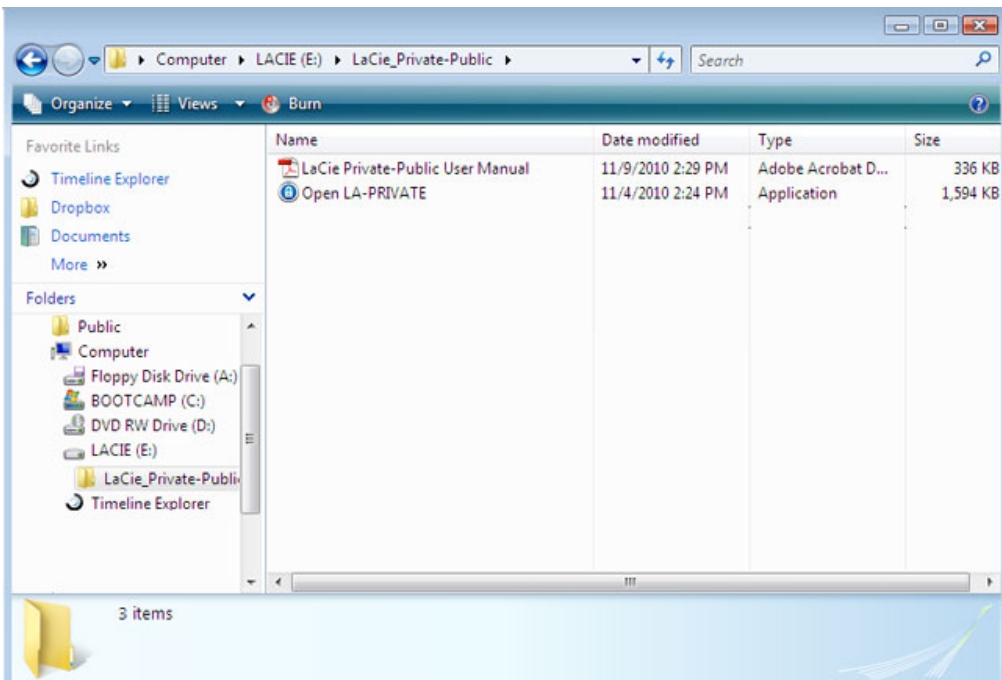
- *Passwords.* You will be prompted to create a password for the LA-PRIVATE volume. Since short passwords are easy to crack, LaCie recommends a minimum of 12 characters. Stronger passwords also include a combination of letters and numbers. Use both capital and small letters for added security. Please consider writing your password on paper and keeping it in a safe place. Data stored on the LA-PRIVATE volume cannot be recovered if the password is lost or forgotten.
- *Time to create LA-PRIVATE.* The estimated time to create the LA-PRIVATE volume is one minute per Gigabyte (GB). For example, 1GB = 1 minute, 50GB = 50 minutes, and 500GB = 8 hours.
- *FAT 32 size limitation.* Due to format limitations, LA-PRIVATE cannot exceed 4GB if the LACIE partition is a FAT 32 volume. To create a LA-PRIVATE volume greater than 4GB, LACIE must be formatted as NTFS (Windows) or HFS+ (Mac).
- *Data stored on LACIE.* Consider the size of the LA-PRIVATE volume carefully, especially if you have already stored data on the LACIE partition. Creating the LA-PRIVATE volume will not delete media on the LACIE partition as long as there is adequate space. For example, you have copied 20GB of data onto 32GB of storage. When creating LA-PRIVATE, you can only use the storage that remains (i.e. less than 12GB).
- *Disable sleep mode on your computer.* In most instances, LaCie Private-Public will pause when your computer goes into sleep mode. To avoid delays, LaCie highly recommends that you disable sleep mode on your computer before launching LaCie Private-Public to create LA-PRIVATE.
- *Do not shut down your computer while LaCie Private-Public is creating LA-PRIVATE.*
- *Administration rights.* You must have administration rights to your computer to access LA-PRIVATE.

Follow the steps below to create LA-PRIVATE:

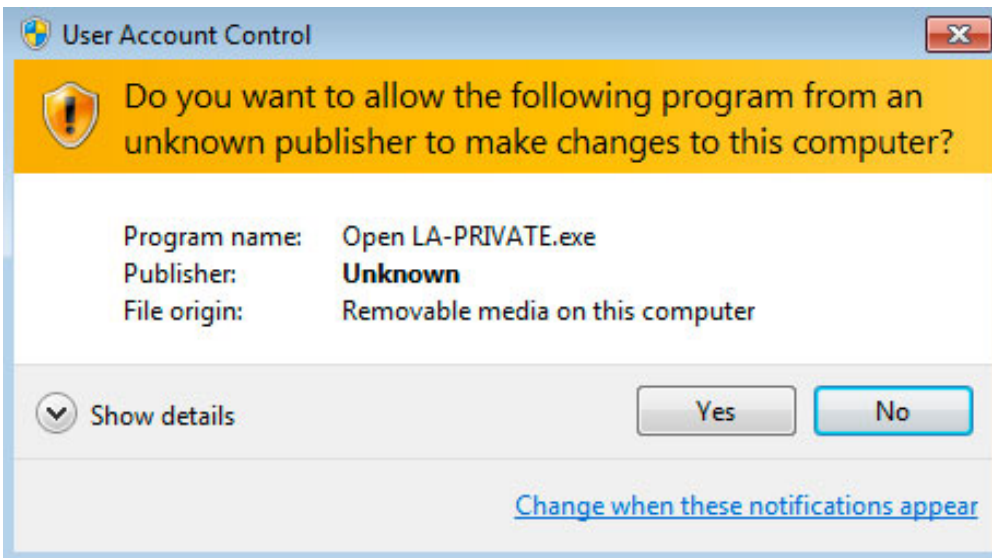
1. Connect the LaCie storage device to a compatible interface port on your computer. The LACIE partition will appear in **My Computer/Computer** (Windows) or on your desktop (Mac).



2. Click twice on the LACIE icon in **My Computer/Computer** (Windows) or on the desktop (Mac).



3. Click twice on the **LaCie Private-Public** application.
4. **Windows:** You may receive a prompt asking if you wish to run LaCie Private-Public. Please confirm that you would like to continue.



5. The first window will ask you to enter a size for the LA-PRIVATE volume. Mac users: Please note that you can use the pulldown menu to select the LA-PRIVATE capacity in MB (Megabytes) or GB (Gigabytes). As a guide, 1000 MB = 1 GB. Choosing GB will allow for sizes such as 1 GB, 10 GB, 50 GB, etc. It is not possible to enter 1.5 GB, 10.5 GB or 50.5 GB. Instead, use MB for capacity to select 1500 MB, 10500 MB or 50500 MB. LA-PRIVATE cannot exceed 4 GB if LA-PUBLIC is formatted FAT 32.



Windows capacity



Mac capacity pulldown

6. Please enter the size of the LA-PRIVATE volume.



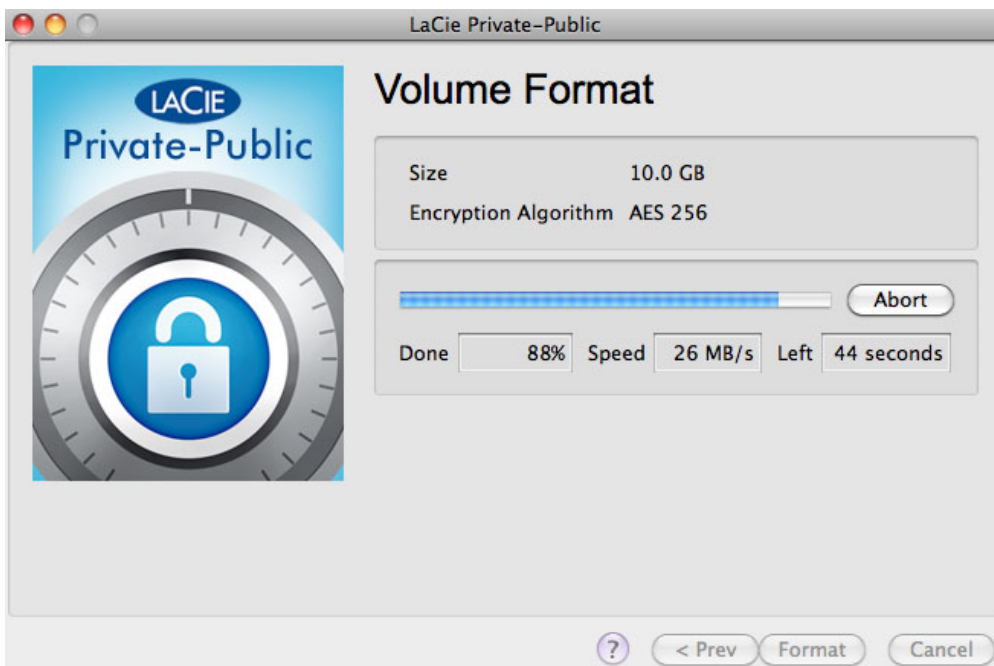
7. Click **Next>**.
8. Enter and confirm your password. Selecting the check box for **Display password** will allow you to see the characters in the password field.



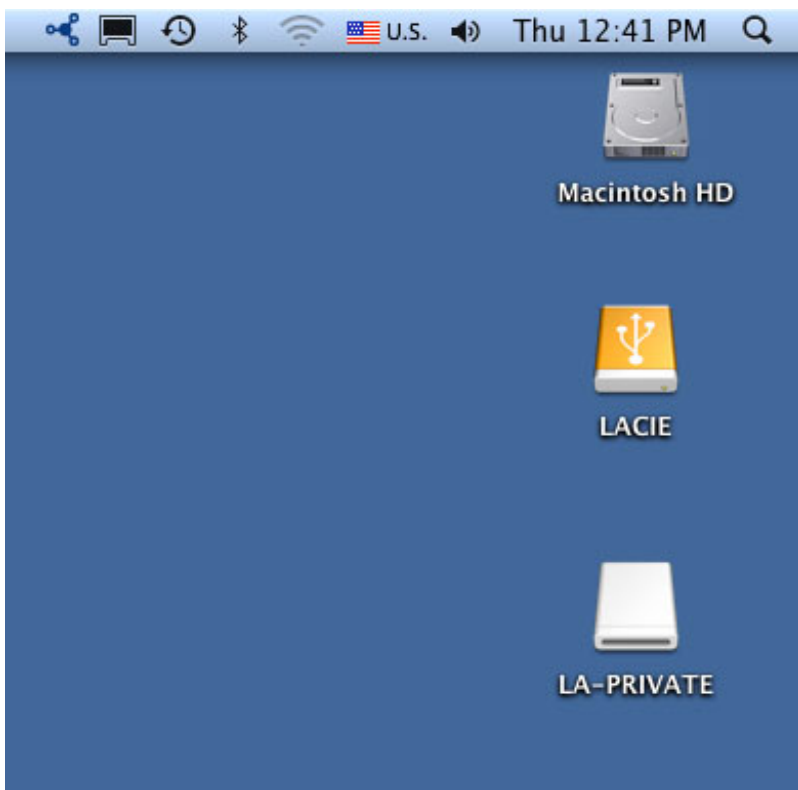
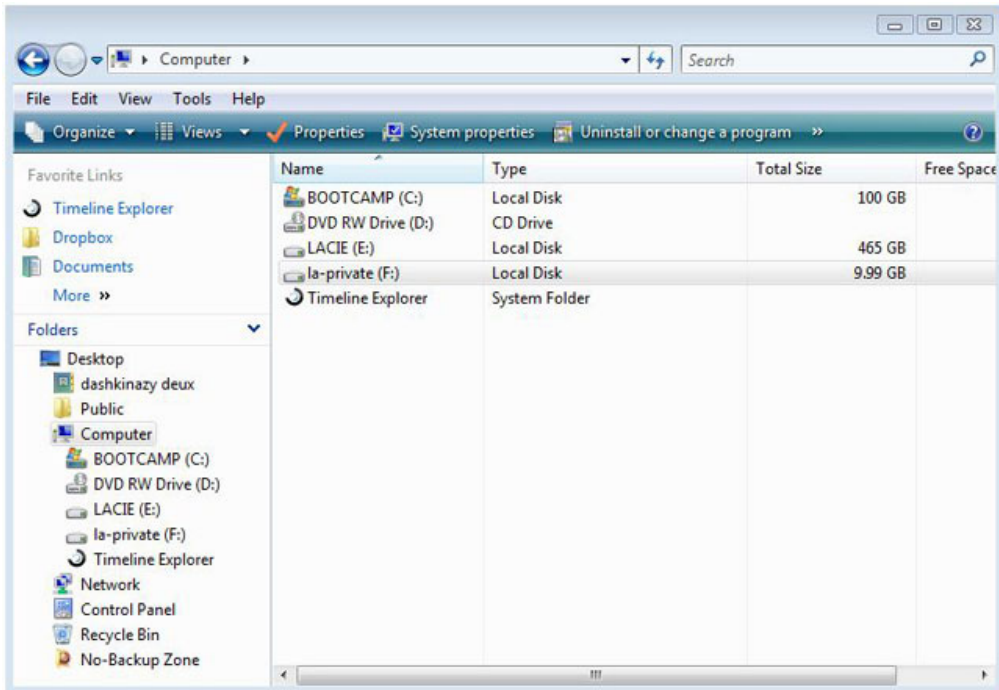
9. Click **Next>**.
10. Click **Format** to create the LA-PRIVATE volume with AES 256 encryption.



11. The format may run for a few minutes or many hours. Estimate the time by assuming one minute per one gigabyte. Please do not turn off your computer during the format.



12. Once the format is complete, LA-PRIVATE will mount automatically in **My Computer/Computer** (Windows) or in the Finder (Mac). It is now ready to store your most important data.



MOUNTING THE LA-PRIVATE VOLUME

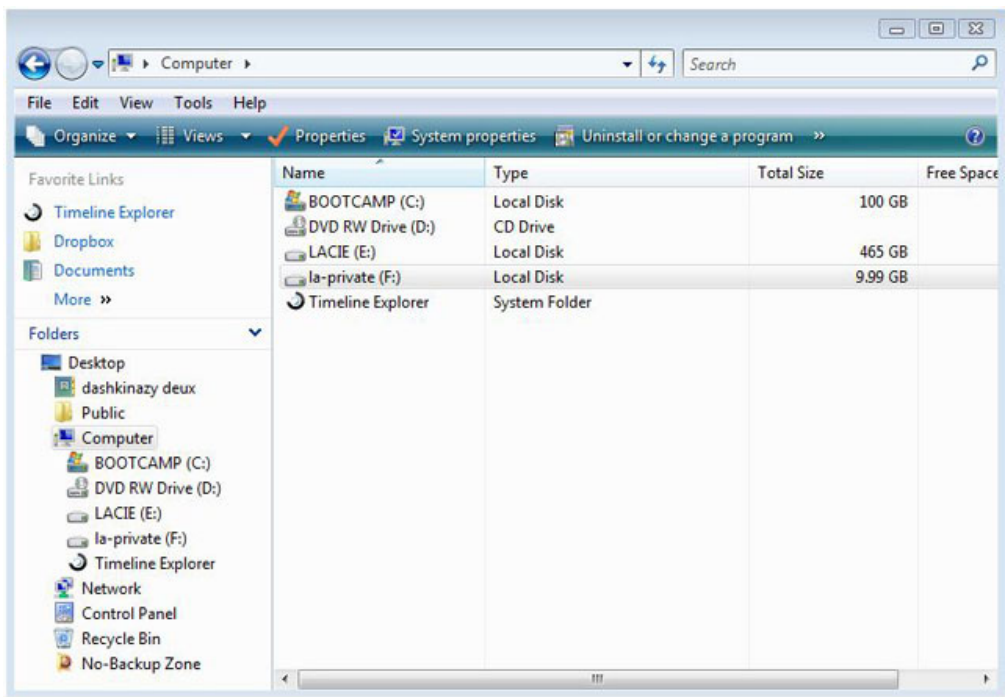
LA-PRIVATE may be locked to protect data from being accessed by unauthorized users. Follow the steps below to unlock and mount the LA-PRIVATE volume.

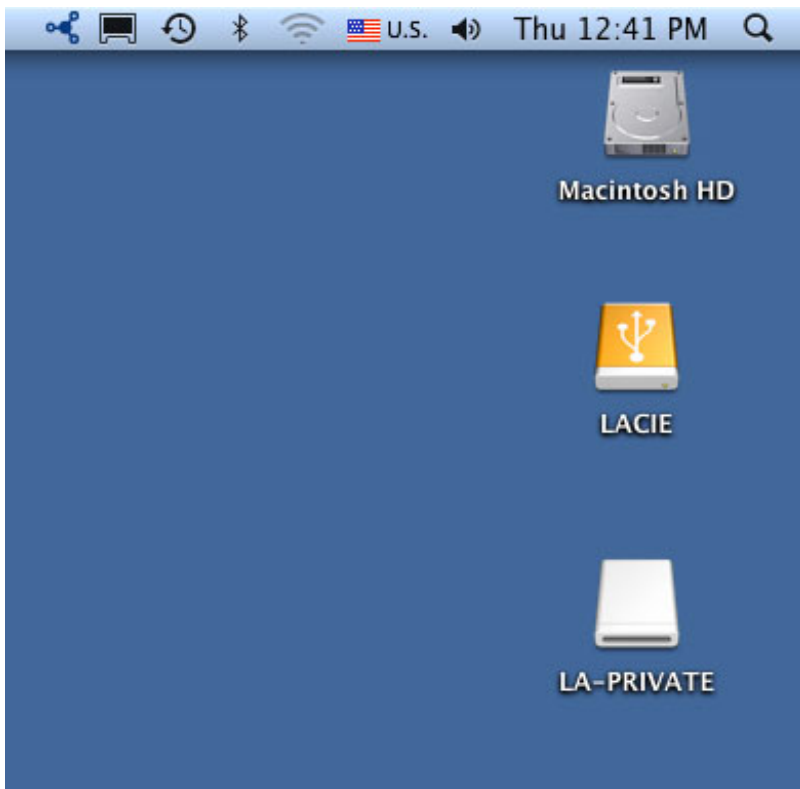
Important info: You must create LA-PRIVATE before attempting to mount the volume.

1. Connect the LaCie storage device to a compatible interface port on your computer.
2. Click twice on the LACIE icon in **My Computer/Computer** (Windows) or on the desktop (Mac).
3. Click twice on the **LaCie Private-Public** application.
4. LaCie Private-Public will recognize that you have created a LA-PRIVATE volume. (If you have not created LA-PRIVATE, the application will guide you through the process. See the steps in [Create the LA-PRIVATE Volume.](#)) Enter your password in the empty field. Please note that your password is case sensitive.



5. To see the characters that you are typing, select the check box for **Display password**. Click **OK**.
6. The LA-PRIVATE volume will appear in **My Computer/Computer** (Windows) or in the Finder (Mac).



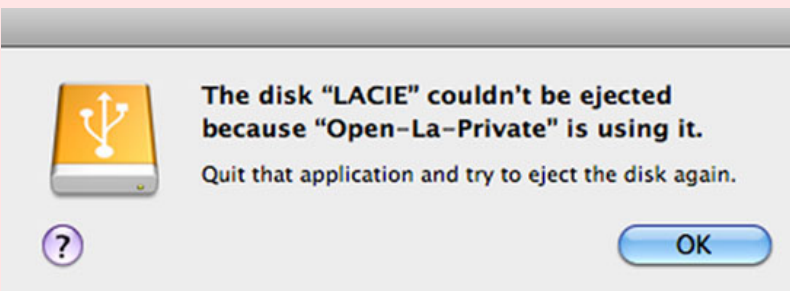
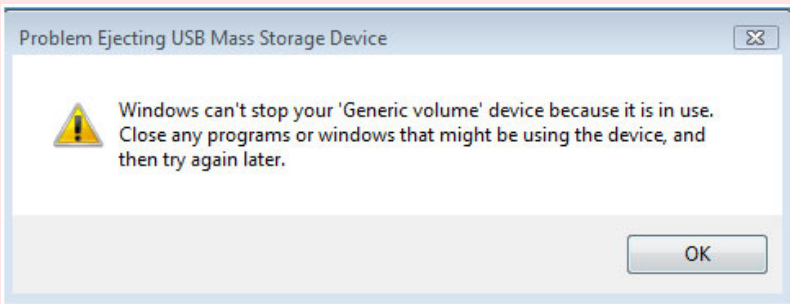


7. Copy and paste, drag and drop, or retrieve existing files from your encrypted LA-PRIVATE volume.

UNMOUNTING AND LOCKING LA-PRIVATE

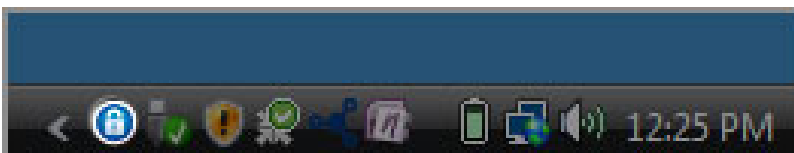
Unmounting LA-PRIVATE will prevent others from accessing your private data. It is a great way to lock LA-PRIVATE since the secure volume will no longer be available for unauthorized use. Follow the steps below to unmount and lock LA-PRIVATE.

Important info: You may wish to unmount both LA-PRIVATE and LACIE at the same time. For your security, LA-PRIVATE must be unmounted before LACIE. Your operating system will alert you when attempting to unmount LACIE first.

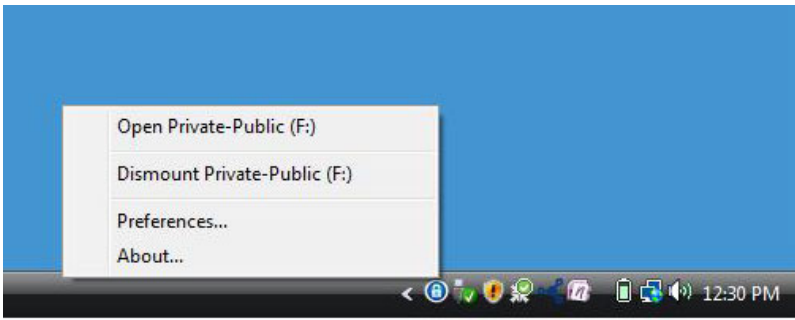


WINDOWS

1. The LaCie Private-Public icon will appear in the system tray when LA-PRIVATE is mounted. The system tray is on the lower right side of your computer screen.



2. Right-click on the LaCie Private-Public icon and select **Dismount Private-Public**.



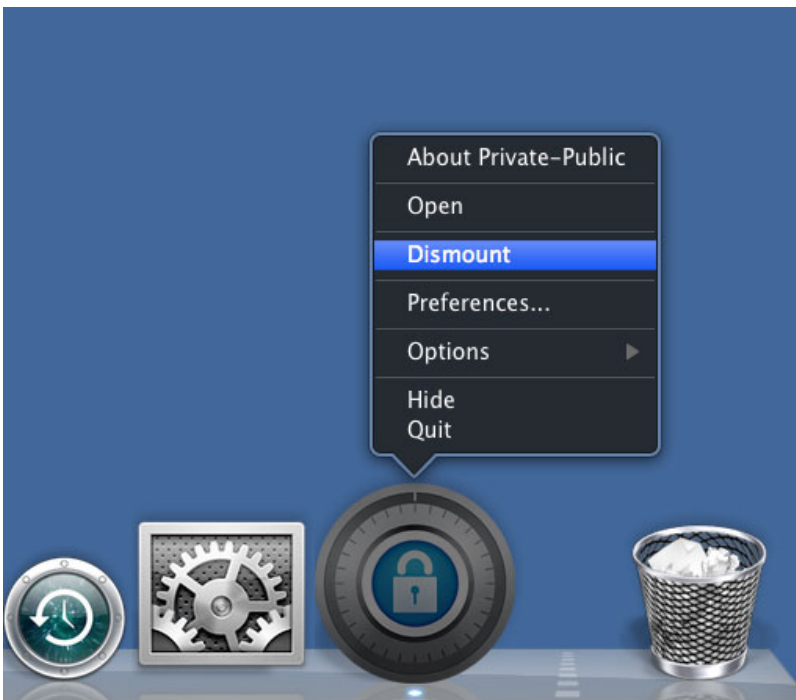
3. The LA-PRIVATE volume has been unmounted and locked.

MAC

1. Go to the Dock and search for the LaCie Private-Public icon.



2. Right-click on the LaCie Private-Public icon to select **Dismount**.



3. LA-PRIVATE has been unmounted and locked.

CHANGING THE LA-PRIVATE PASSWORD

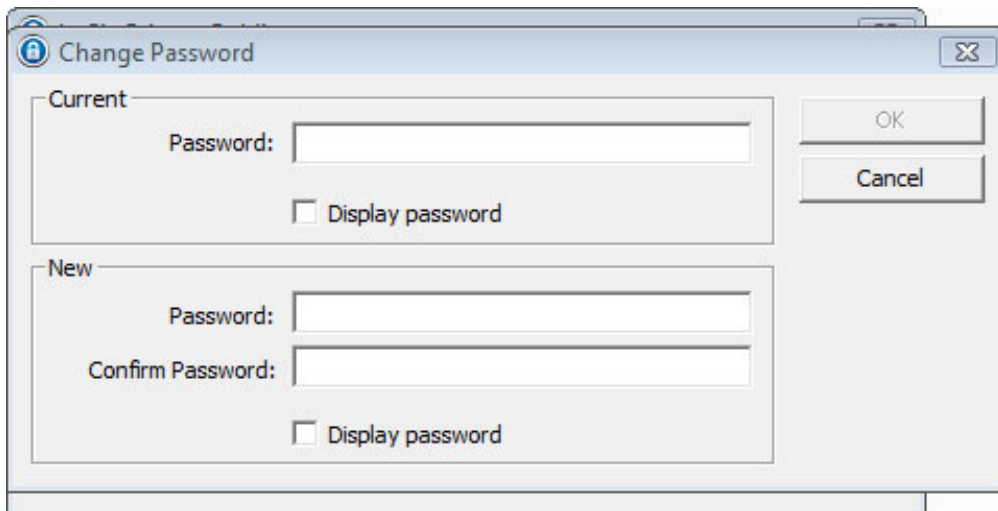
Important info: You must create the LA-PRIVATE volume before attempting to change its password.

Follow the steps below to change the password to LA-PRIVATE.

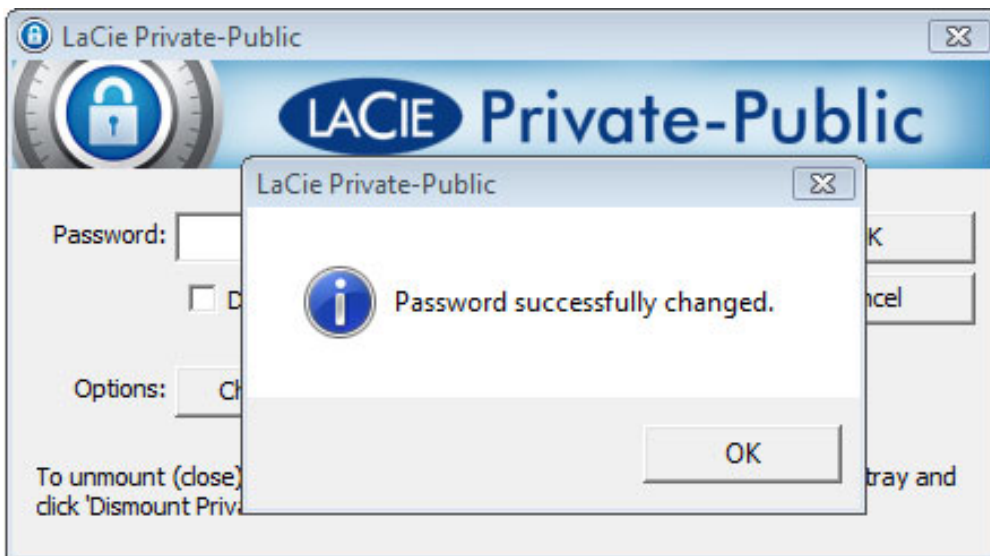
1. Insert the LaCie storage device into the compatible interface port on your computer.
2. Click twice on the LACIE icon in **My Computer/Computer** (Windows) or on the desktop (Mac).
3. LaCie Private-Public will recognize that you have created a LA-PRIVATE volume and prompt you for the password. (If you have not created LA-PRIVATE, the application will guide through the process. See the steps in [Create the LA-PRIVATE Volume.](#))



4. Click on the button **Change Password**.
5. Enter your **Current Password** as well as the **New Password**. You must also complete the field **Confirm Password** with the new password.



6. Check the **Display Password** boxes to see the characters as they are typed.
7. Click **OK**.
8. Your password has been changed.



DELETE LA-PRIVATE

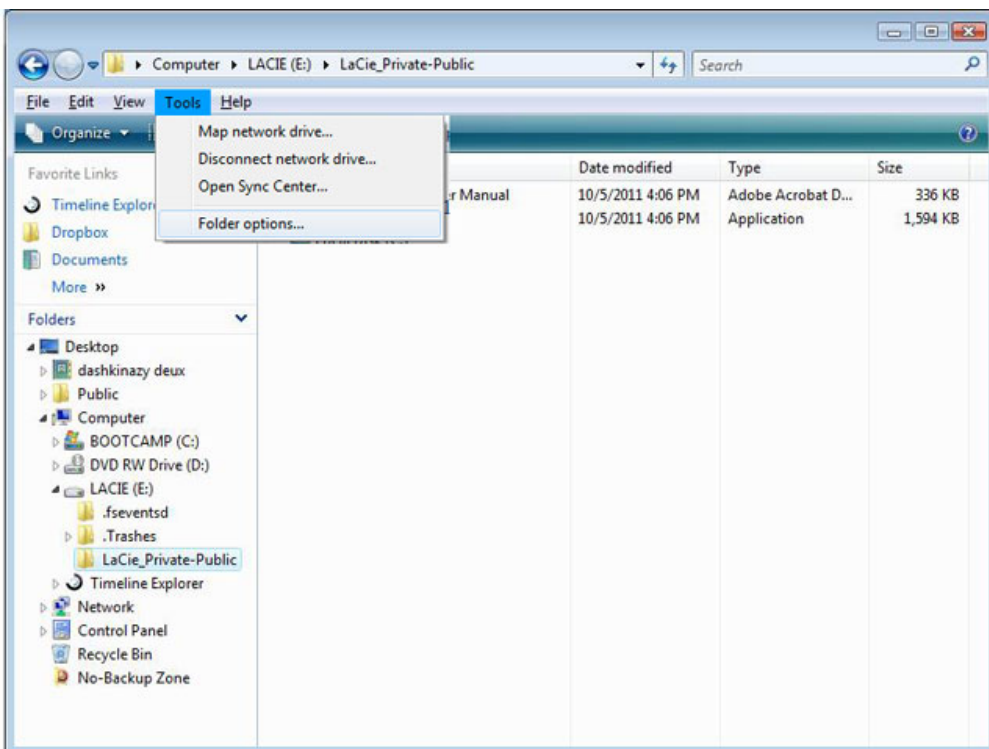
Important info: Removing the LA-PRIVATE volume will delete all of its data. LaCie highly recommends that you copy all data from LA-PRIVATE to a temporary location before deleting the secure volume.

INVISIBLE FILES

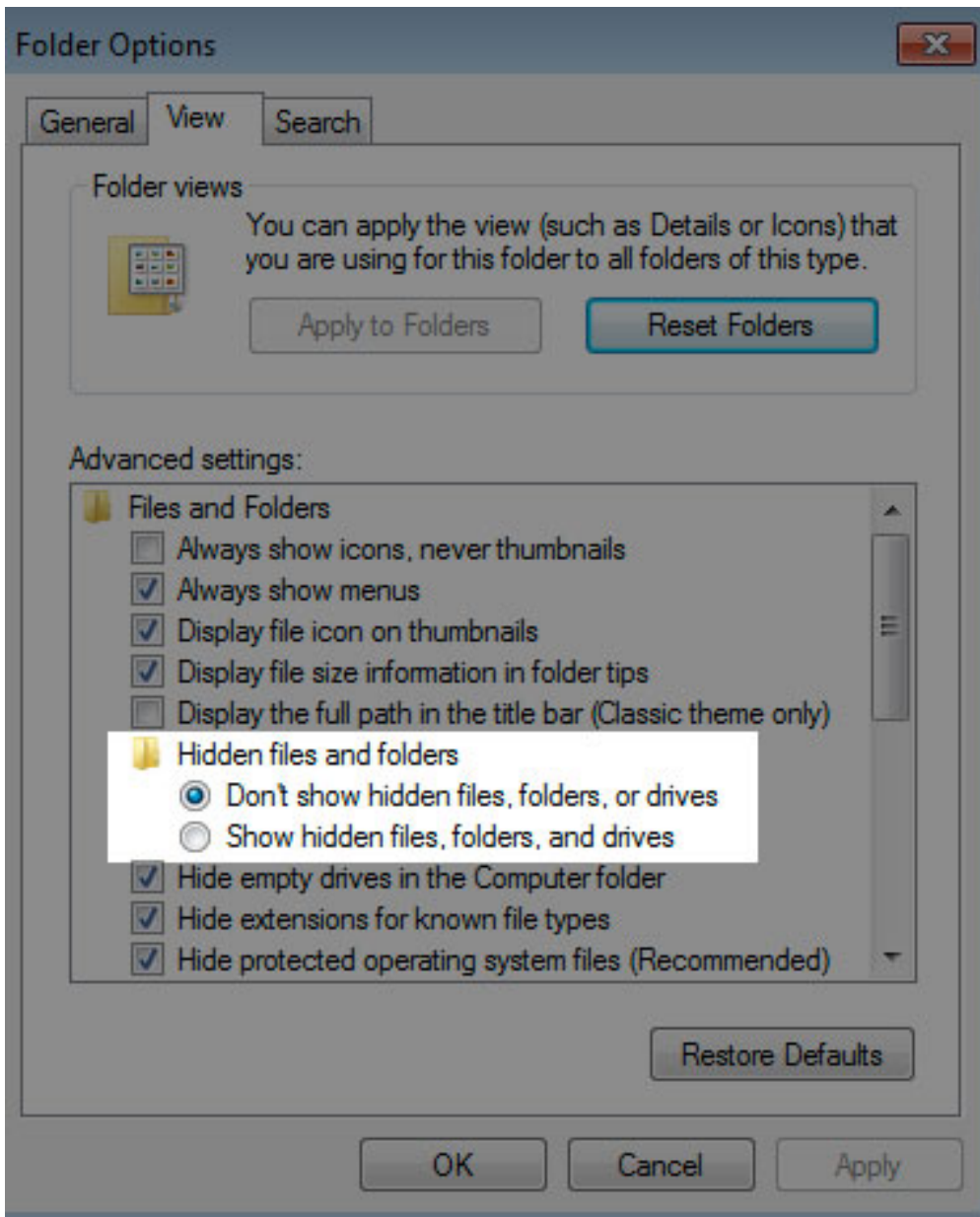
Deleting LA-PRIVATE requires that hidden files are made visible. Follow the steps below to reveal hidden files and delete the LA-PRIVATE volume.

Windows

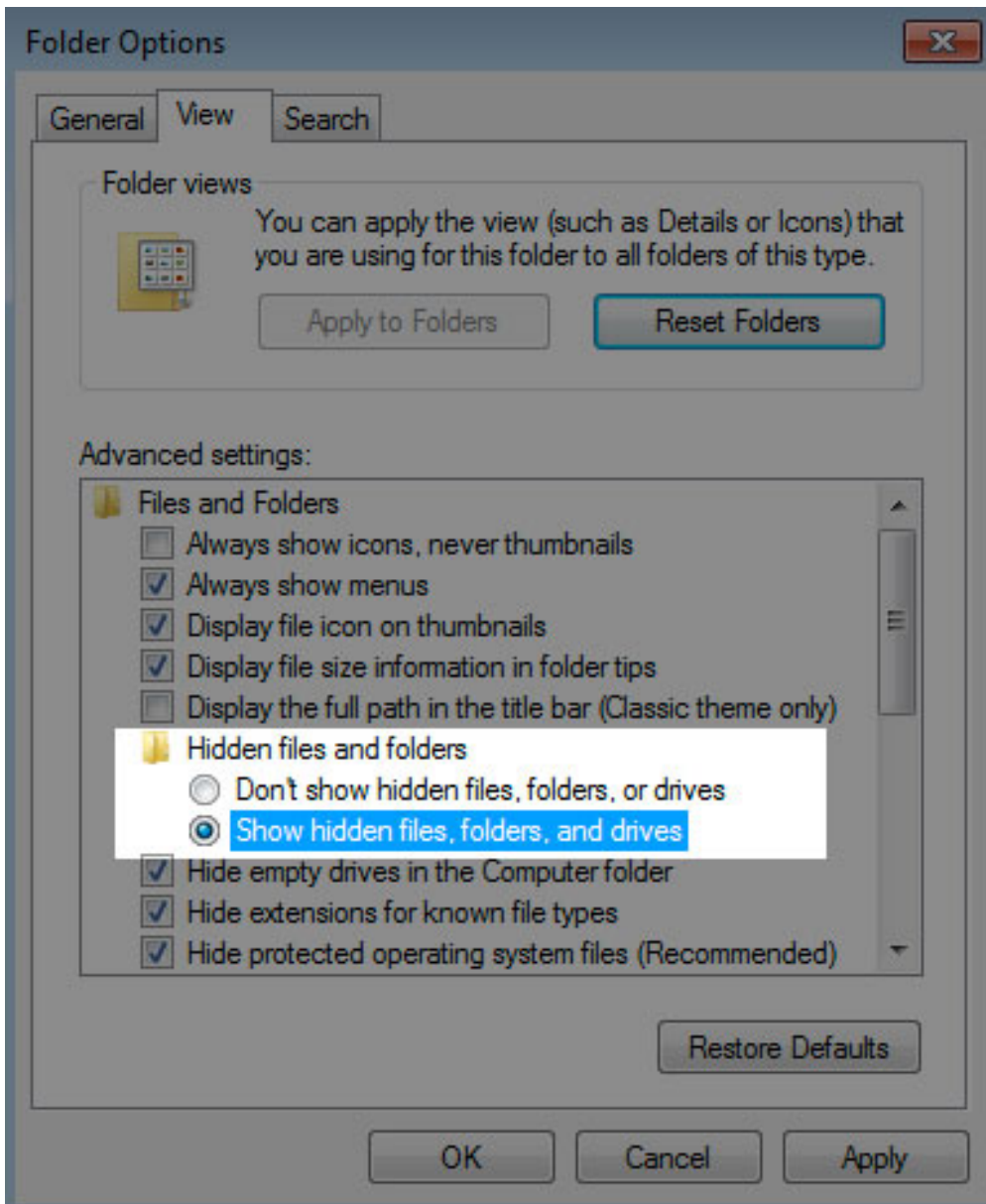
1. Insert the LaCie storage device into the compatible interface port on your computer.
2. Click **Start > My Computer/Computer**. You should see the LACIE partition.
3. Go to the pulldown menu **Tools > Folder Options**.



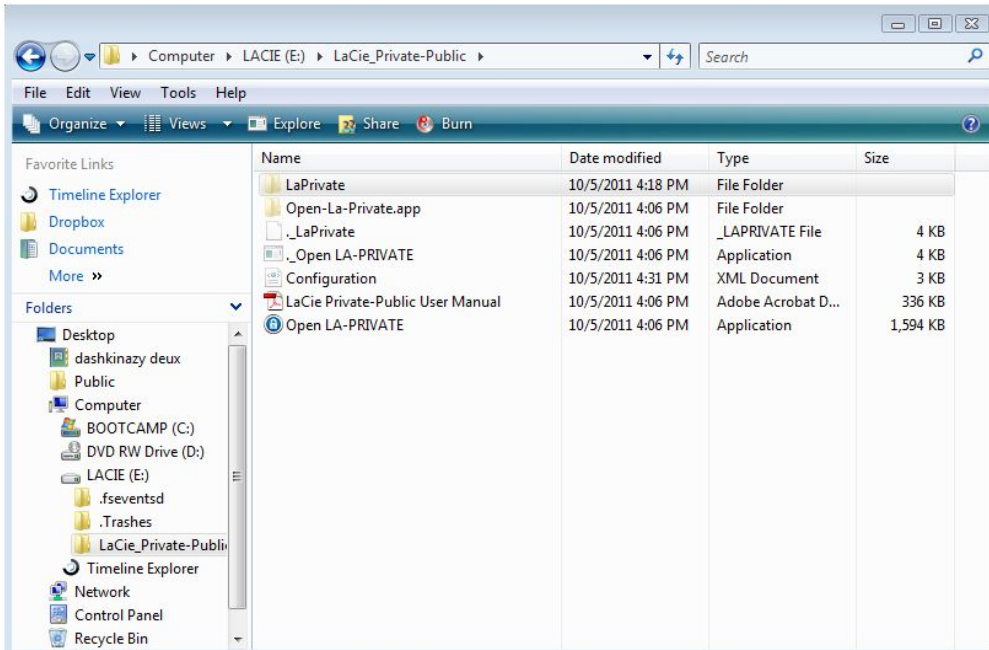
4. Note the section called *Hidden files and folders*. The default setting is "Don't show hidden files, folders, or drives".



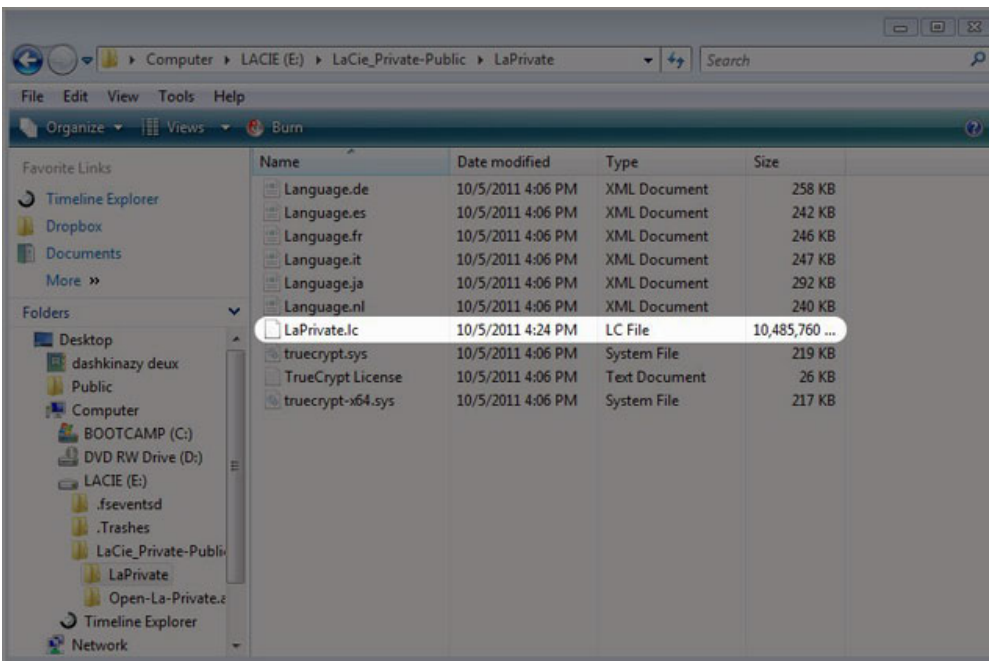
5. Change the *Hidden files and folders* setting to "Show hidden files, folders, and drives". Click **Apply**.



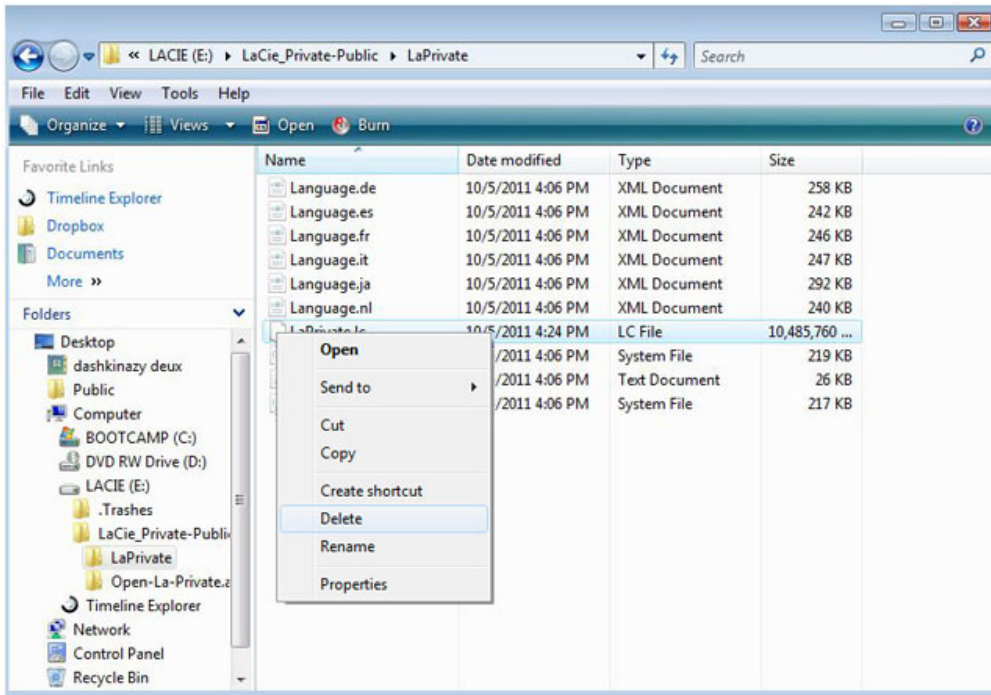
6. Go to the LA-PUBLIC partition and open the folder called **LaPrivate**.



7. Look for the file called “LaPrivate.lc”.



8. Right-click on “LaPrivate.lc” and select **Delete**.

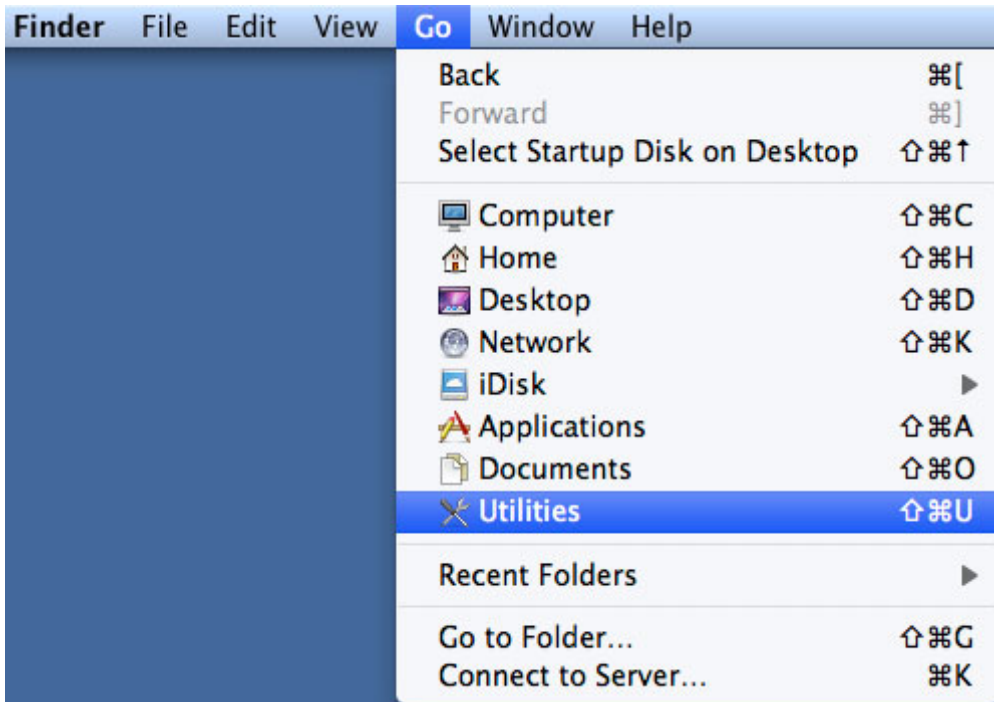


9. The LA-PRIVATE volume has been deleted.
10. To restore your folder settings, go to **Tools > Folder Options**. Select “Don't show hidden files, folders, or drives” and click **Apply**.

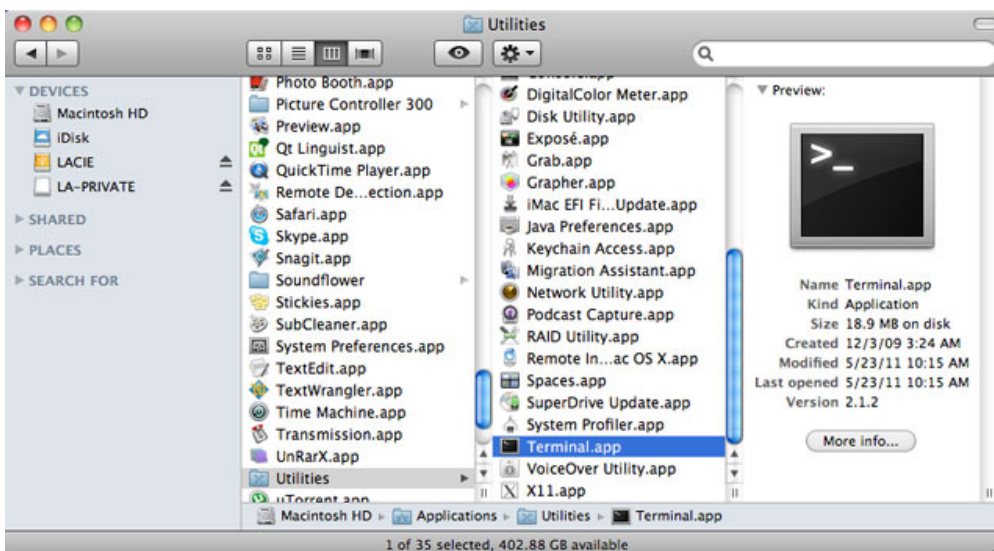
Mac

Revealing hidden files in Mac OS X requires the Terminal program.

1. Connect the LaCie storage device to a compatible interface port on your computer. The LACIE icon should appear on the desktop.
2. Go to the pulldown menu **Go > Utilities**.

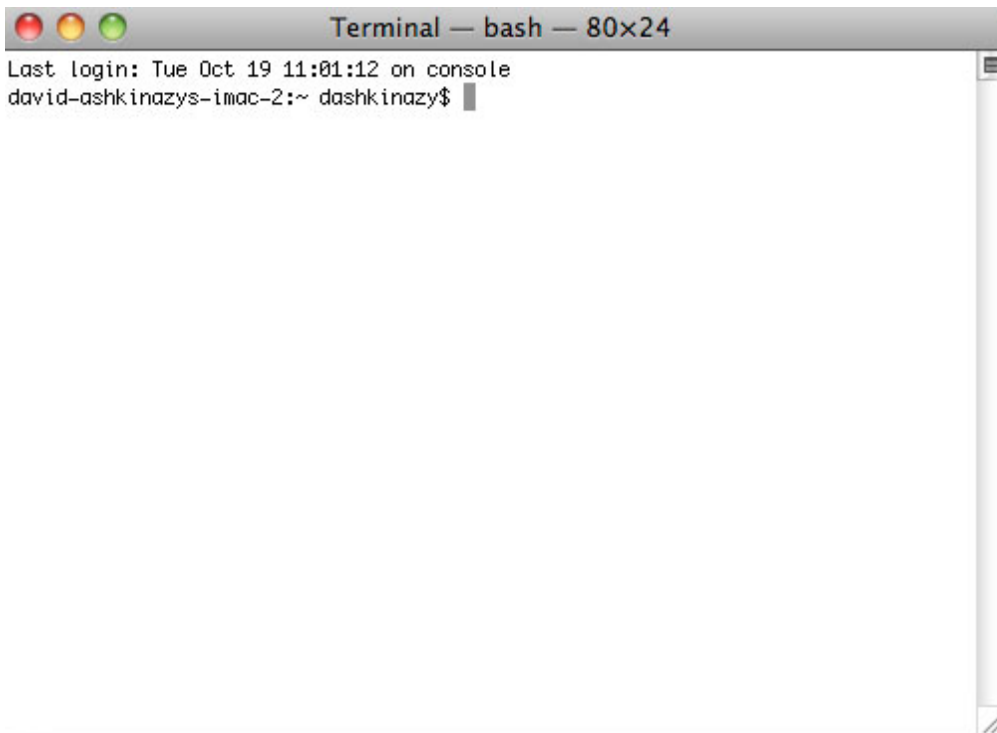


3. Click twice on the program **Terminal**.



4. The Terminal window will appear. To reveal hidden files, type the following string exactly as it appears, including spaces and capital letters:

defaults write com.apple.Finder AppleShowAllFiles YES

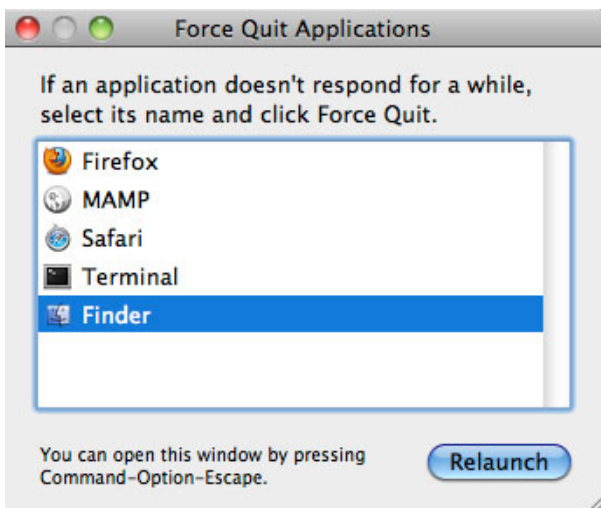
A screenshot of a macOS Terminal window. The title bar reads "Terminal — bash — 80x24". The window contains the following text: "Last login: Tue Oct 19 11:01:12 on console", "david-ashkinazys-imac-2:~ dashkinazy\$", and a blank line with a cursor.

```
Terminal — bash — 80x24
Last login: Tue Oct 19 11:01:12 on console
david-ashkinazys-imac-2:~ dashkinazy$
```

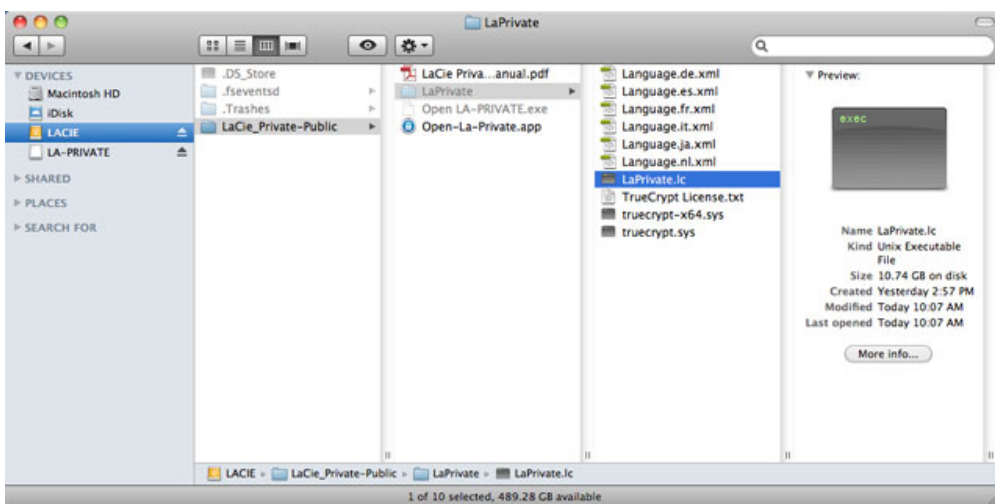
A screenshot of a macOS Terminal window. The title bar reads "Terminal — bash — 80x24". The window contains the following text: "Last login: Tue Oct 19 18:09:07 on ttys000", "david-ashkinazys-imac-2:~ dashkinazy\$", "defaults write com.apple.Finder AppleShowAllFiles YES", and "david-ashkinazys-imac-2:~ dashkinazy\$".

```
Terminal — bash — 80x24
Last login: Tue Oct 19 18:09:07 on ttys000
david-ashkinazys-imac-2:~ dashkinazy$ defaults write com.apple.Finder AppleShowAllFiles YES
david-ashkinazys-imac-2:~ dashkinazy$
```

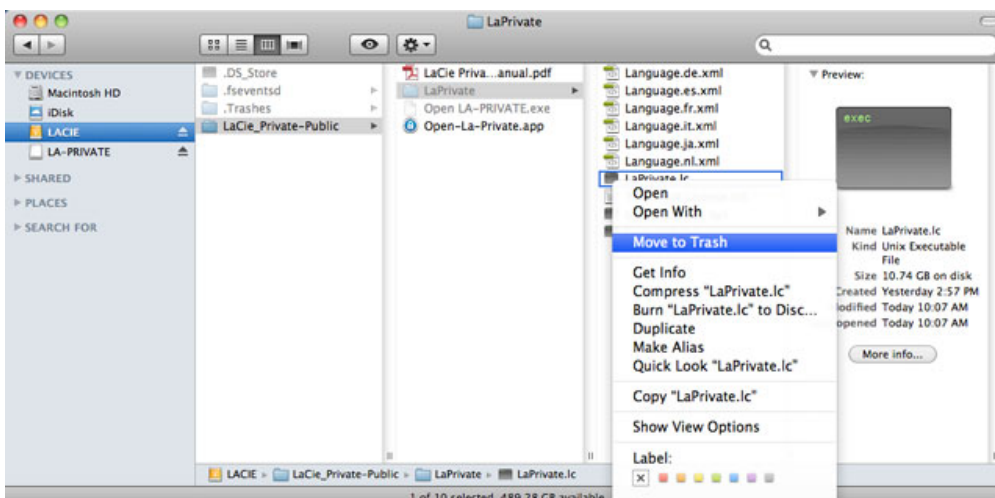
5. You must now restart the Finder. Push the following buttons on your Macintosh keyboard at the same time: **option+cmd+esc**. The Force Quit Applications window will open. Select **Finder** and click **Relaunch**.



6. After the Finder has restarted, open the LA-PUBLIC partition on your LaCie storage device.
7. Open the LaPrivate folder and look for the file called "LaPrivate.lc".

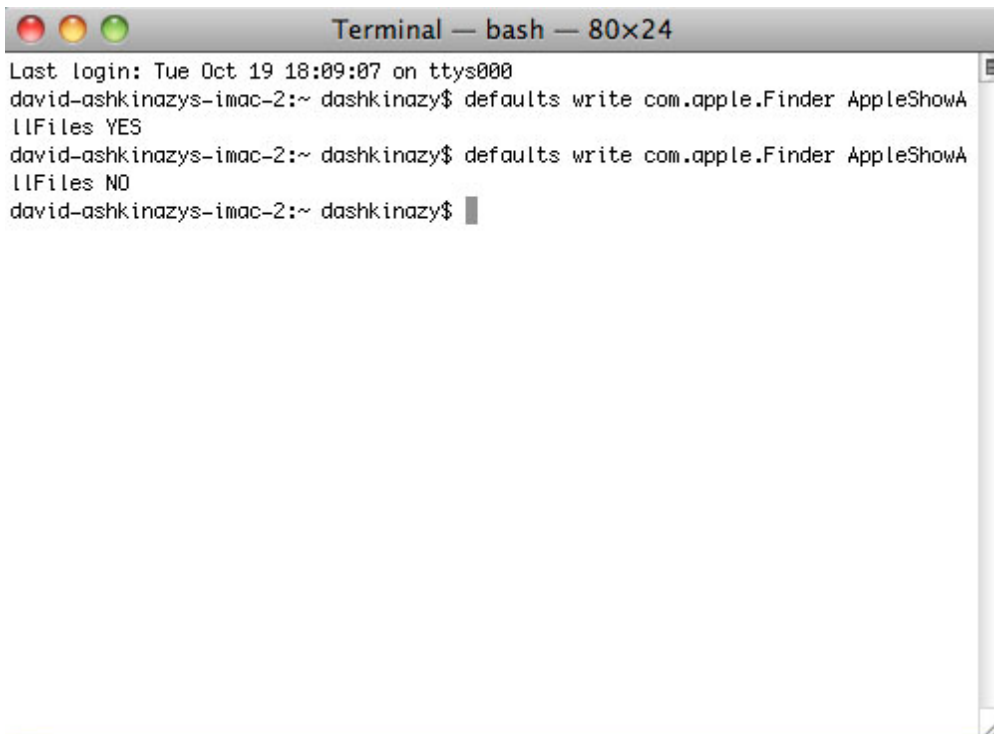


8. Right-click on "LaPrivate.lc" and select **Move to Trash**.



9. The LA-PRIVATE volume has been deleted.
10. To conceal hidden files, go to the pulldown menu **Go > Utilities**. Open the Terminal application and type the following string exactly as it appears, including spaces and capital letters:

defaults write com.apple.Finder AppleShowAllFiles NO



```
Terminal — bash — 80x24
Last login: Tue Oct 19 18:09:07 on ttys000
david-ashkinazys-imac-2:~ dashkinazy$ defaults write com.apple.Finder AppleShowA
llFiles YES
david-ashkinazys-imac-2:~ dashkinazy$ defaults write com.apple.Finder AppleShowA
llFiles NO
david-ashkinazys-imac-2:~ dashkinazy$ █
```

11. You must now restart the Finder. Push the following buttons on your Macintosh keyboard at the same time: **option+cmd+esc**. The Force Quit Applications window will open. Select **Finder** and click **Relaunch**.
12. Hidden files are now concealed.

LA-PRIVATE FREQUENTLY ASKED QUESTIONS

LA-PRIVATE is a secure volume that takes advantage of strong Advanced Encryption Standard (AES) 256 to keep your most important data safe. The LaCie Private-Public application allows you to easily create and manage a LA-PRIVATE volume (See [Create the LA-PRIVATE Volume](#)). Please see our list of frequently asked questions below for further information on LA-PRIVATE.

Q: Does LaCie Private/Public work on a Macintosh computer?

A: Yes. LaCie Private/Public is supported on Macintosh computers with:

- The most recent versions of Mac OS X 10.7 and higher.
- An Intel processor
- MacFUSE (See [Mac Users - Install OSXFuse Before Creating LA-PRIVATE](#))

Q: LaCie Private/Public will not let me create a LA-PRIVATE volume larger than 4 GB. Why?

A: There may be more than one reason that you cannot create a LA-PRIVATE volume larger than 4 GB. Two possible explanations:

- Your LaCie storage device is almost full. LaCie Private-Public is protecting the data stored on your partition from being erased by limiting the size of LA-PRIVATE.
- You formatted the partition as FAT 32. Due to system format limitations, LA-PRIVATE cannot exceed 4 GB on a FAT 32 partition. You must reformat the partition as NTFS (Windows) or HFS+ (Mac) in order to create a larger LA-PRIVATE volume. Please note that formatting a storage device will delete all of its data. Follow the steps below to create a new LA-PRIVATE volume:
 1. **Copy all data stored on the LaCie storage partition(s) as well as the existing LA-PRIVATE volume before reformatting your storage device.** You can copy the data to a temporary location such as your internal hard drive or another storage device. Please make certain to copy your LaCie User Manual and software utilities as well. You will use LaCie Private-Public to recreate the new LA-PRIVATE volume.
 2. See [Optional Formatting and Partitioning](#) for further information on formatting your storage device as NTFS or HFS+. You may name the new NTFS or HFS+ partition LACIE for ease of reference but it is not mandatory.
 3. Once the format is complete, copy LaCie Private-Public to your new NTFS or HFS+ partition. **Please use caution when launching Private-Public.** Running the program from My Computer/Computer or the Mac desktop will create an encrypted partition on your internal hard drive.
 4. See [Create the LA-PRIVATE Volume](#) for instructions on creating a new LA-PRIVATE volume.

Q: I can only create a LA-PRIVATE volume with 1, 10, or 100 unit increments. For example, 5 GB, 50 GB, or 500 GB. I want to create a LA-PRIVATE volume that is 5.5 GB, 50.5 GB, or 550 GB. Is it possible?

A: Yes. See [Create the LA-PRIVATE Volume](#). Please note the details regarding the pulldown menu for MB/GB on a Mac.

Q: Where do I go to access the LA-PRIVATE volume?

A: You must launch LaCie Private-Public to enter the password. See [Mounting the LA-PRIVATE Volume](#).

Q: How do I lock the LA-PRIVATE volume from unauthorized access?

A: See [Unmounting and Locking LA-PRIVATE](#).

Q: Can I change the LA-PRIVATE password?

A: Yes. See [Changing the LA-PRIVATE Password](#).

Q: What happens if the LA-PRIVATE password is lost or forgotten?

A: To protect your security, the LA-PRIVATE password is heavily protected and not available for others to recover. This also applies to an authorized user who has lost or forgotten his LA-PRIVATE password. Unfortunately, the data on LA-PRIVATE is not available to anyone, including LaCie, without the password. **Please note that LaCie is not responsible for any data that has been lost due to a forgotten LA-PRIVATE password.** Consider using a password that is easy for you to remember but close to impossible for unauthorized users to guess.

Q: Do I have to be an administrator to use LaCie Private-Public and to open LA-PRIVATE?

A: You must have administrative rights to your computer in order to run LaCie Private-Public and to access the LA-PRIVATE volume.

Q: Why can't I open LaCie Private-Public when TrueCrypt software is also installed?

A: Both types of software use the same engine. Uninstall TrueCrypt before installing LaCie Private-Public.
